



KBC 600V 35-800A

For new installations, Bussmann recommends the 700 Volt FWP series fuse. The 600V fuses are supplied as replacements only.

Type	Ordering Information				Dimensions	
	Part Number			Carton Qty.	Carton Weight (lbs)	Figure Number
KBC 600V	KBC-35	KBC-45	KBC-60	10	1.40	Fig. 1
	KBC-40	KBC-50				
	KBC-70	KBC-90		5	1.44	Fig. 2
	KBC-80	KBC-100				
	KBC-110	KBC-150	KBC-200	1	0.48	Fig. 1
	KBC-125	KBC-175			0.77	
KBC-225	KBC-300	KBC-400	1.32			
KBC-250	KBC-350		4.50			
KBC-450	KBC-500	KBC-600				
KBC-800						

- Interrupting rating 200kA RMS Symmetrical. 1 kg = 2.2 lbs 1 lb = 0.45 kg
 - Consult Bussmann for DC ratings.
 - See accessories on page 20.
- †U.L. Recognition on 35 through 600 amperes only.

Dimensions

Fig. 1: 35-60 and 110-600 Amp Range

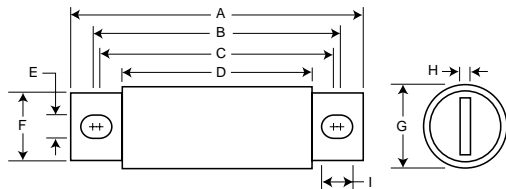


Fig. 2: 70-100 Amp Range

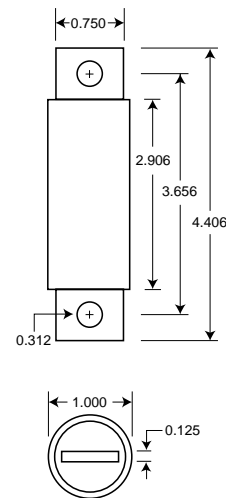
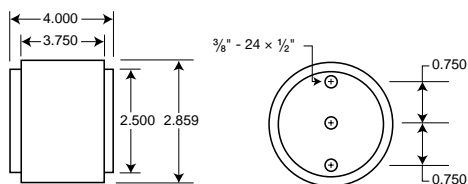


Fig. 3: 800 Amp Range



Order #	Fig.	A	B	C	D	E	F	G	H	I
KBC-35-60	1	4.375	3.750	3.500	2.750	0.343	0.625	0.813	0.094	0.468
KBC-70-100	2	See Drawing								
KBC-110-200	1	4.406	3.719	3.594	2.906	0.312	0.875	1.219	0.187	0.375
KBC-225-400	1	5.125	4.188	3.563	2.906	0.406	1.000	1.500	0.250	0.719
KBC-450-600	1	5.125	4.389	3.687	2.875	0.406	1.500	2.000	0.250	0.757
KBC-800	3	See Drawing								

Dimension in inches.
1mm = 0.0394" 1" = 25.4mm

This bulletin is intended to clearly present comprehensive product data and provide technical information that will help the end user with design applications. Bussmann reserves the right, without notice, to change design or construction of any products and to discontinue or limit distribution of any products. Bussmann also reserves the right to change or update, without notice, any technical information contained in this bulletin. Once a product has been selected, it should be tested by the user in all possible applications.