

Specialty Fuse

Time-Delay, Non-Rejecting

GMF, GRF & HLR



CATALOG SYMBOLS: GMF and GRF
TIME-DELAY
NON-REJECTION STYLE FUSE

	GMF	GRF
AMPERES	1/8-6-1/4	7-10
VOLTS AC	300	125

INTERRUPTING RATING: 10,000 AMPERES

FUSE:

U.L. LISTED, STD. 248-14 (GUIDE #JDYX, FILE #E14853)
CSA CERTIFIED, C22.2 NO. 248.14 (CLASS #1422-01, FILE #53787)

FUSE CARRIER:

UL RECOGNIZED: 15A/300 VAC (GUIDE #IZLT2, FILE #E14853)
CSA CERTIFIED: 15A/300 VAC (CLASS #6225-01, FILE #47235)

Electrical Ratings for Type GMF and GRF Fuses and Non-Rejection Style Carriers

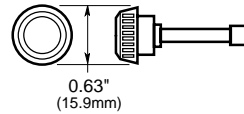
Fuse	Carrier	Fuse	Carrier
GMF-3/10	HLR	GMF-2-8/10	HLR
GMF-1/2	HLR	GMF-3	HLR
GMF-6/10	HLR	GMF-3-2/10	HLR
GMF-8/10	HLR	GMF-4	HLR
GMF-1	HLR	GMF-5*	HLR
GMF-1-1/4	HLR	GMF-6-1/4*	HLR
GMF-1-6/10	HLR	GRF-7**	HLR
GMF-2	HLR	GRF-8**	HLR
GMF-2-1/2	HLR	GRF-10**	HLR

*300 Volts AC.

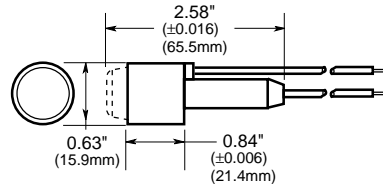
**125 Volts AC.

Dimensional Data

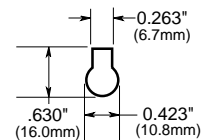
FUSE



FUSE AND CARRIER



MOUNTING HOLE



- Fuse and carrier knob are an integral one-piece unit.
- Type GMF and GRF fuses mount in the single size carrier type HLR.
- HLR carrier leads are 6" of #18 insulated solid copper wire.
- Units can be panel-mounted when ordered with separate steel, snap-in clip.
- Specify panel mounting clip #6374 for panels 0.043" to 0.062" thick; and clip #4909 for thickness of 0.030" to 0.042". (Clip is inserted into mounting hole and carrier is then pushed into place).
- Non-rejection carrier - HLR.
- The caps are included with the fuse as a one-piece unit. There are no replacement caps.

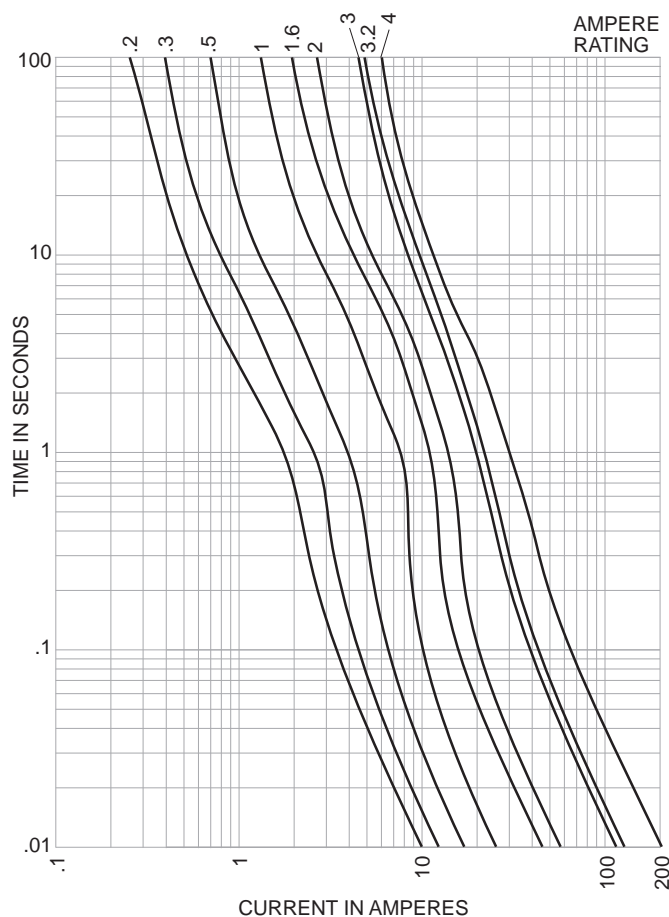
CE logo denotes compliance with European Union Low Voltage Directive (50-1000 VAC, 75-1500 VDC). Refer to BIF document #8002 or contact Bussmann Application Engineering at 314-527-1270 for more information.

Specialty Fuse

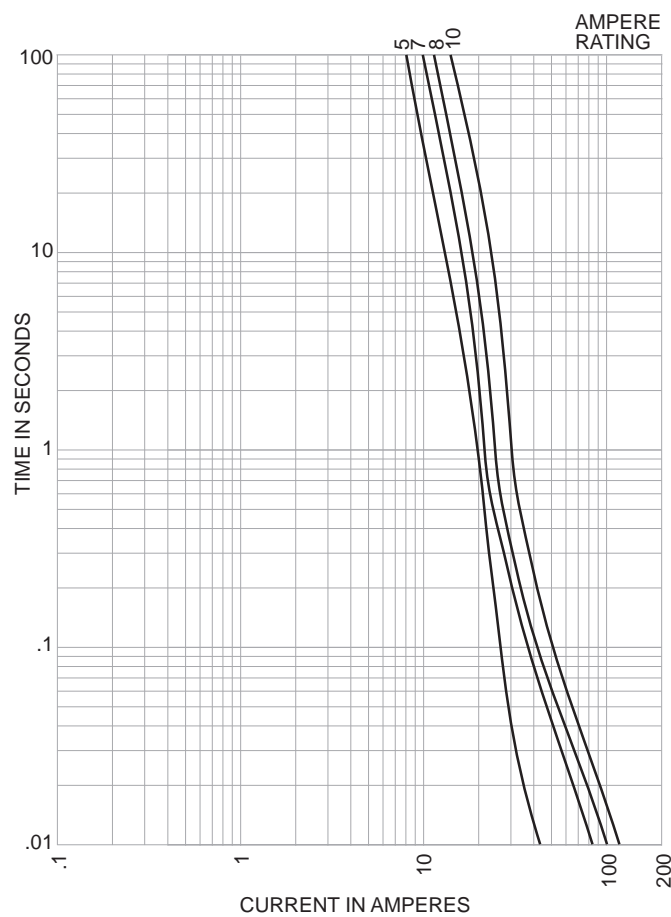
Time-Delay, Non-Rejecting

GMF, GRF & HLR

Time-Current Characteristic Curves—Average Melt



Time-Current Characteristic Curves—Average Melt



This bulletin is intended to clearly present comprehensive product data and provide technical information that will help the end user with design applications. Bussmann reserves the right, without notice, to change design or construction of any products and to discontinue or limit distribution of any products. Bussmann also reserves the right to change or update, without notice, any technical information contained in this bulletin. Once a product has been selected, it should be tested by the user in all possible applications.