

Class H Fuseblocks 600 Volts

H600 Series



Catalog Symbol: H600 Series
 Ampere Rating: 1/10 to 600 Amperes
 Voltage Rating: 600 Volts AC
 Agency Approvals:
 U.L. Listed, U.L. 512, Guide IZLT, File E14853
 CSA Certified, C22.2 No. 39, Class 6225-01, File 47235
 Withstand Rating: 10,000 Amps RMS Sym.
 For use with Class K5 & H Fuses (Bussmann NOS and RES)
 Materials: Thermoplastic
 U.L. Flammability: 94 VO
 Temperature Rating (RTI): 130°C

Class H Fuseblocks (600V) Catalog Data (for NOS and RES Fuses)

Amps	Poles	Basic Catalog Number	Terminal Type (Suffix No.)								Dimensions (Inches) – See Next Page For Figures											Max. Wire Size		
			Screw				Box Lug w/				Fig. No.	A	B	C	D	E	F	G	H	J Dia. x C' Bore	K			
			Clip with Reinforced Spring	Pressure Plate	Pressure Plate & Clip with Reinforced Spring	Clip with Reinforced Spring	Clip w/ Reinforced Spring (Copper Only)	Copper Only	0.25" Quick Connect															
1/10	1	H60030-1	S	SR	P	PR	C	CR	COR	CO	—	1	6.25	1.73	1.55	1.56	0.46	0.62	3.125	1.56	0.28 x 0.5	0.27	S.P. #10 Cu C #6 Cu	
		H60030-2	S	SR	P	PR	C	CR	COR	CO	—				2									2.89
30	3	H60030-3	S	SR	P	PR	C	CR	COR	CO	—	3												
31	1	H60060-1	S	SR	P	PR	C	CR	COR	CO	—	4	(See Figures)											#2 Cu-Al
		H60060-2	S	SR	P	PR	C	CR	COR	CO	—	5	(See Figures)											
60	3	H60060-3	S	SR	P	PR	C	CR	COR	CO	—	6	(See Figures)											
61	1	H60100-1	—	SR	—	—	—	CR	COR	—	—	7	9.5	2.38	2.22	2.63	0.67	0.88	4.25	1.69	0.28 x 0.5	0.34	#1/0 Cu-Al	
		H60100-2	—	SR	—	—	—	CR	COR	—	—	8			4.03									5.84
100	3	H60100-3	—	SR	—	—	—	CR	COR	—	—	9	(See Figures)											
101	1	H60200-1	—	—	—	—	—	CR	COR*	—	—	10	9.63	3.09	3.0	3.31	0.5	2.0	3.0	0.75	—	0.31	250MCM Cu-Al	
		H60200-3	—	—	—	—	—	CR	—	—	—	11	(See Figures)											
201	1	H60400-1	—	—	—	—	—	CR	COR*	—	—	10	12.0	4.0	3.0	4.5	0.63	1.75	3.0	1.0	—	0.56	500MCM Cu-Al	
		H60400-3	—	—	—	—	—	CR	—	—	—	12	(See Figures)											
401	1	H60600-1	—	—	—	—	—	CR	—	—	—	10	14.0	4.97	3.0	5.5	1.125	1.75	4.0	1.0	—	0.56	2-500MCM Cu-Al	
		H60600-3	—	—	—	—	—	CR	—	—	—	13	(See Figures)											

*U.L. Recognized, No CSA Certification.

CE CE logo denotes compliance with European Union Low Voltage Directive (50-1000 Vac, 75-1500 Vdc). Refer to BIF document #8002 or contact Bussmann Application Engineering at 314-527-1270 for more information.



Class H Fuseblocks

600 Volts

H600 Series

Dimensional Data

600V, 1/10 to 30A

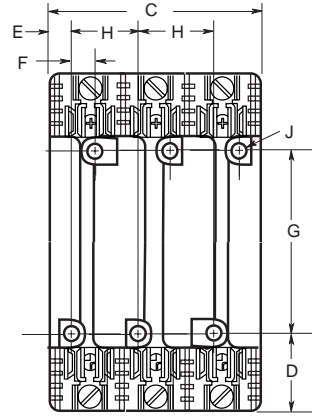
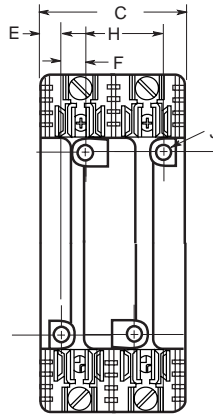
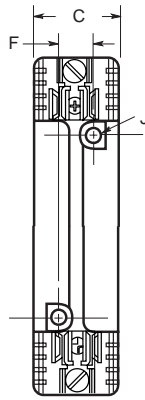
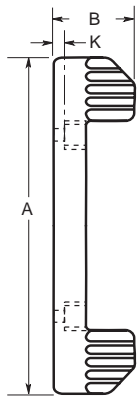


FIGURE 1.

FIGURE 2.

FIGURE 3.

600V, 31 to 60A

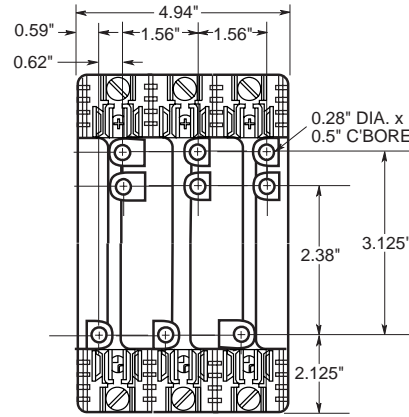
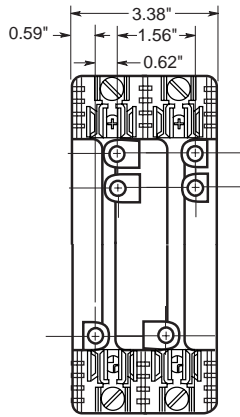
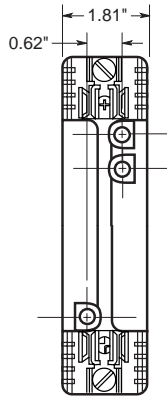
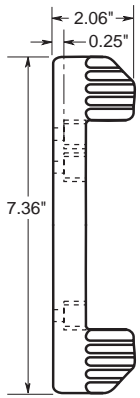


FIGURE 4.

FIGURE 5.

FIGURE 6.

600V, 61 to 100A

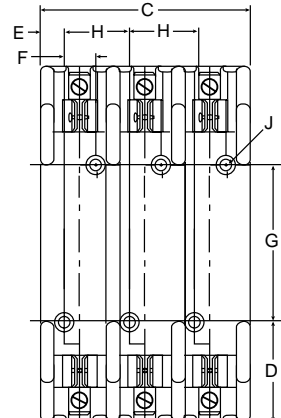
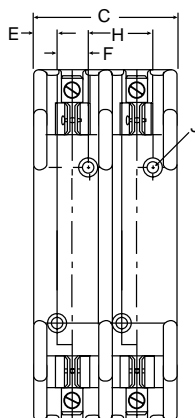
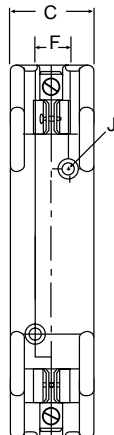
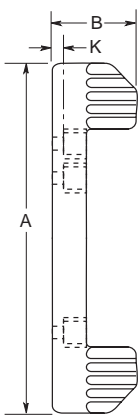


FIGURE 7.

FIGURE 8.

FIGURE 9.



rev. 1/8/98

Class H Fuseblocks

600 Volts

H600 Series

600V, 101 to 600A

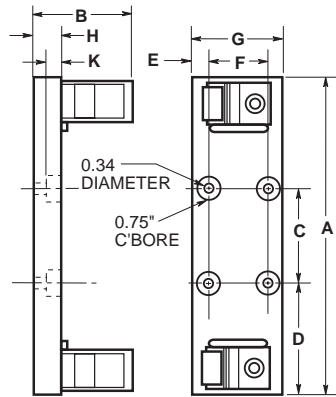


FIGURE 10.

600V, 101 to 200A

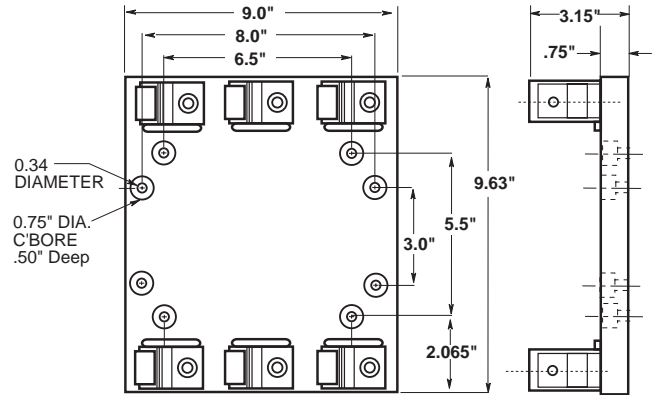


FIGURE 11.

600V, 201 to 400A

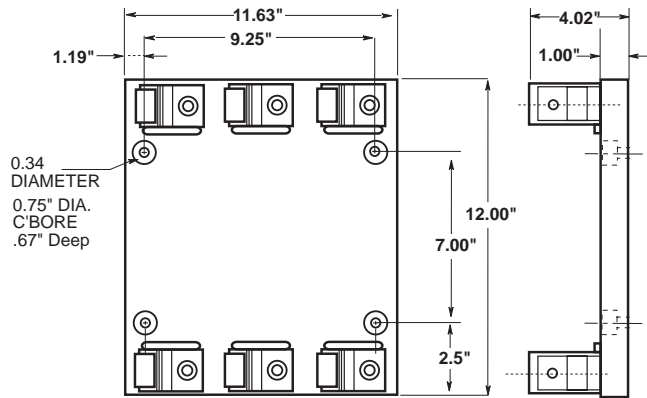


FIGURE 12.

600V, 401 to 600A

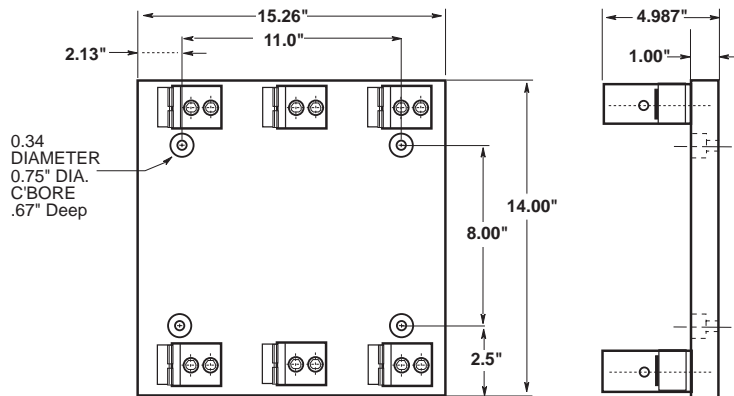


FIGURE 13.

This bulletin is intended to clearly present comprehensive product data and provide technical information that will help the end user with design applications. Bussmann reserves the right, without notice, to change design or construction of any products and to discontinue or limit distribution of any products. Bussmann also reserves the right to change or update, without notice, any technical information contained in this bulletin. Once a product has been selected, it should be tested by the user in all possible applications.